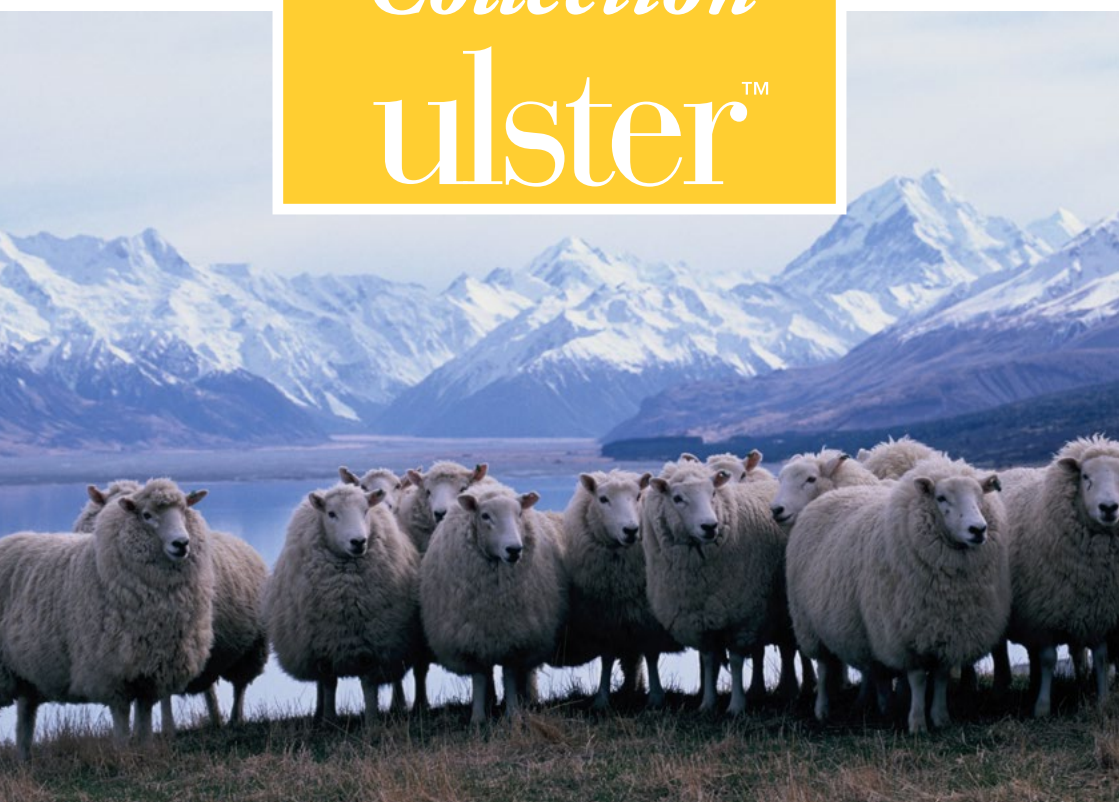




*Open Spaces*  
*Collection*  
ulster<sup>TM</sup>





# Contents

Monaco	page 4
Panama	page 5
Dubai	page 6





Open Spaces Laneve

page 7 - 8

Auckland

page 9 -10

Queenstown

page 11 - 13

Wellington Stripe

page 14

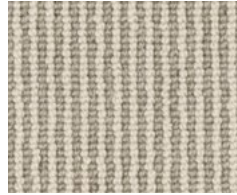
Technical Specification

page 15

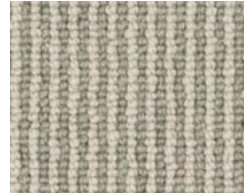
# Monaco

100% Wool  
Suitable for Heavy Wear

Available in 5m, 4m, 3m,  
2m & 1m widths



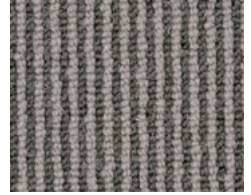
72/1175 Gallery



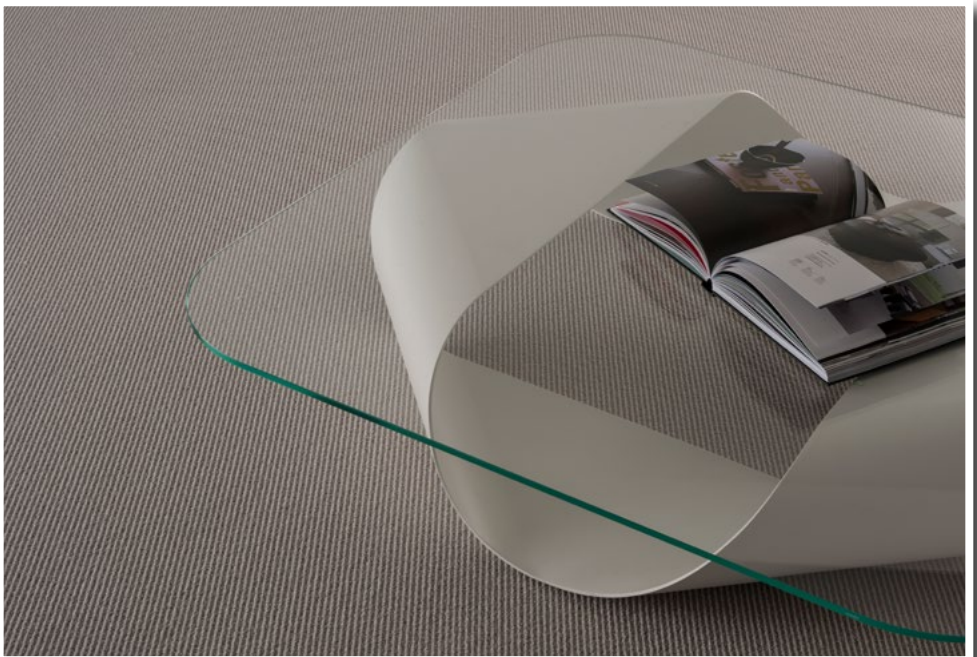
65/1175 Filo



76/1175 Chrome



78/1175 Galaxy



Gallery (72/1175)

# Panama

100% Wool  
Suitable for Heavy Wear

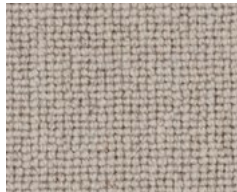
Available in 5m, 4m, 3m,  
2m & 1m widths



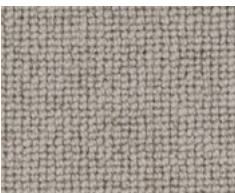
Quicksilver (70/1170)



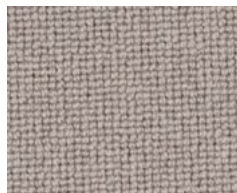
30/1170 Gesso



70/1170 Quicksilver



60/1170 Ashen



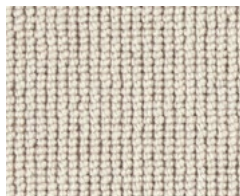
72/1170 Orbit



# Dubai

100% Wool  
Suitable for Heavy Wear

Available in 5m, 4m, 3m,  
2m & 1m widths



12/1319 Polar



Echo (76/1319)



72/1319 Alpine



74/1319 Tor



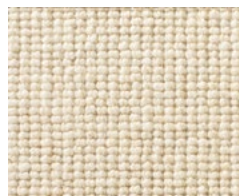
35/1319 Glaze



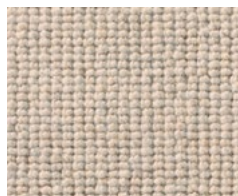
76/1319 Echo



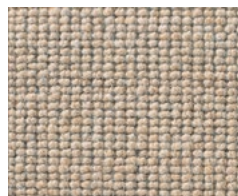
10/1319 Snowdrop



15/1319 Lemongrass



20/1319 Blonde



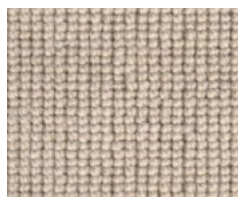
43/1319 Demerara



30/1319 Malt



31/1319 Pearl



61/1319 Limewash



71/1319 Dapple



ulster™  
[www.ulstercarpets.com](http://www.ulstercarpets.com)

Open Spaces





# What is Open Spaces Laneve?

Ulster Carpets, working in partnership with Wools of New Zealand, have developed three 100% New Zealand wool tufted (loop pile), Laneve ranges, Auckland, Queenstown and Wellington Stripe.

Manufactured in Denmark by danfloor (an Ulster Group Company specialising in the manufacture of tufted products), the Open Spaces Auckland, Queenstown and Wellington Stripe ranges utilise a dense loop pile texture to create a contemporary floor covering that is also soft and warm.

## Why Choose Laneve?

In choosing any of these Wools of New Zealand Laneve products the consumer is purchasing a luxurious 100% wool carpet, supplied by farmers who must meet a comprehensive range of environmental, social responsibility and animal welfare standards.





# Auckland

100% New Zealand Wool  
Suitable for Heavy Wear

Available in 5m, 4m, 3m,  
2m & 1m widths



Mortar (28/1428)



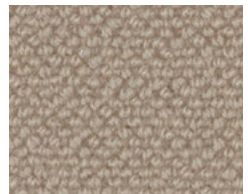
10/1428 Calico



62/1428 Hammock



71/1428 Coast



25/148 Driftwood

*"...Open Spaces Auckland, a plain rib range  
comprises of 12 colourways"*



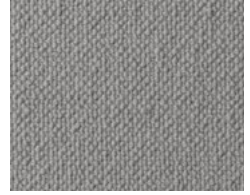
28/1428 Mortar



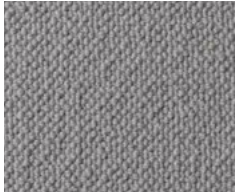
70/148 Grayling



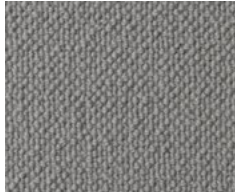
74/1428 Anvil



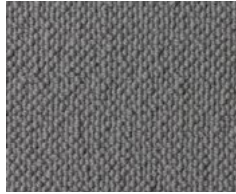
72/11428 Sidewalk



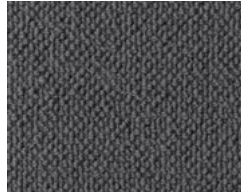
11/1428 Ermine



73/1428 Glint



75/1428 Concrete



76/1428 Paraffin



Concrete (75/1428)



# Queenstown



Nova (68/1431)



20/1431 Crystal Beige



25/1431 Bunting



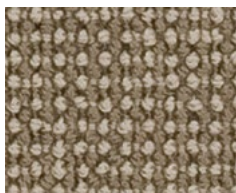
63/1431 Quill



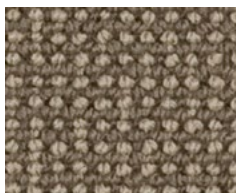
64/1431 Jute



70/1431 Swedish Grey



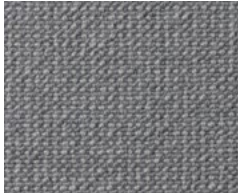
66/1431 Awning



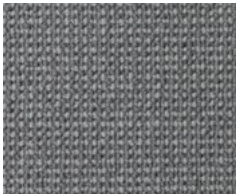
68/1431 Nova



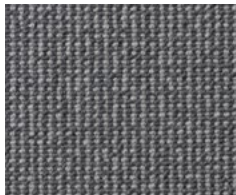
75/1431 Furnace Black



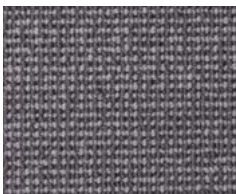
80/1431 Deft



60/1431 Baltic



76/1431 Cadet



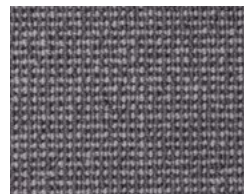
77/1431 Ink



71/1431 Gull



72/1431 Urban



73/1431 Whale



Baltic (601431)

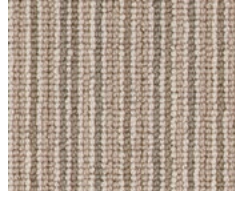




# Wellington Stripe

100% New Zealand Wool  
Suitable for Heavy Wear

Available in 5m, 4m, 3m,  
2m & 1m widths



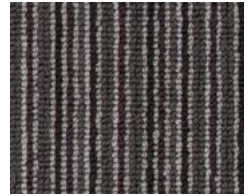
40/1433 Linnet



20/1433 Reed



10/1433 Quay



60/1433 Carbon



Reed (20/1433)



## Technical Specification

Range/Design	Ref No	Widths Available	Suitability	Tog Rating
Open Spaces				
Monaco	1175	5, 4, 3, 2, 1m	Heavy Wear	1.0
Panama	1170			1.0
Dubai	1319			1.6
Open Spaces Laneve				
Auckland	1428	5, 4, 3, 2, 1m	Heavy Wear	1.2
Queenstown	1431			1.2
Wellington Stripe	1433			1.2

### *Like what you see?*

Inspired to redecorate but still undecided on style? You can order samples direct to your door via the Ulster website (all free of charge). Simply browse through our beautiful Ulster products and add the swatches which take your fancy to your shopping basket and follow the simple steps to check out and complete your order. The friendly folks in our sample department will then parcel them up, pop them in the post and have your lovely Ulster samples to you as soon as possible.

Along with your samples, you will find a green Ulster bag - we ask that you return any unwanted samples with the freepost label included. This helps to reduce waste and helps to divert carpet from landfill - an important part of our commitment to protecting the environment.

You can also use the website to find your local Ulster stockist; enter your postcode into the "Where to Buy" section and our website will find your nearest store.

[www.ulstercarpets.com](http://www.ulstercarpets.com)



Queenstown Nova (68/1431)



Ulster Carpets  
Castleisland Factory  
Garvaghy Road  
Craigavon  
Northern Ireland

Email: [marketing@ulstercarpets.com](mailto:marketing@ulstercarpets.com)  
Tel: 028 3833 4433

ulster<sup>TM</sup>  
[www.ulstercarpets.com](http://www.ulstercarpets.com)